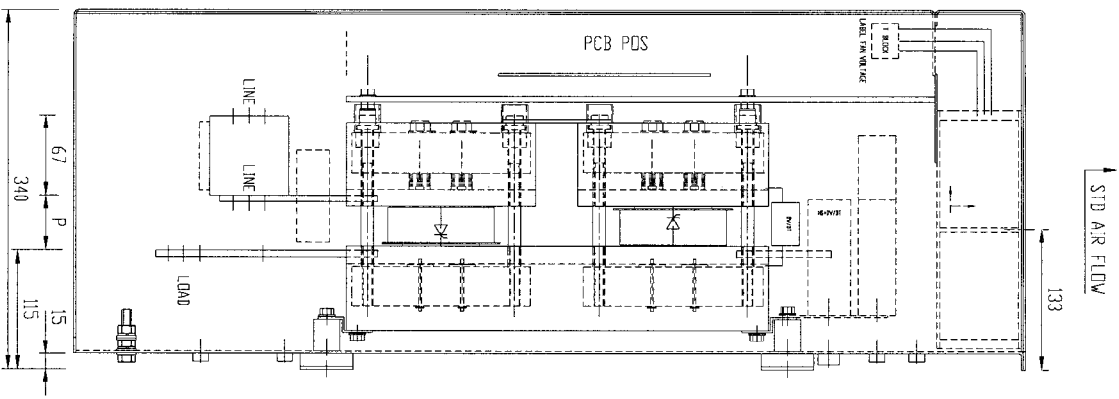
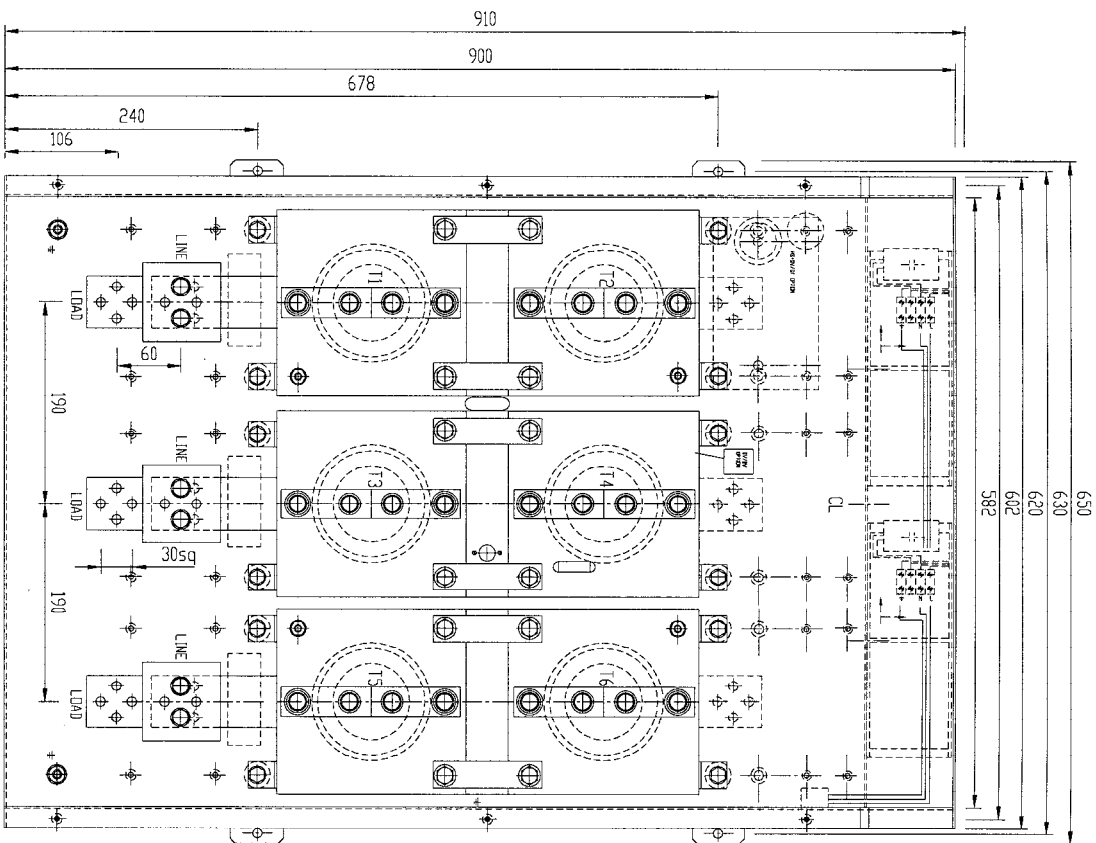
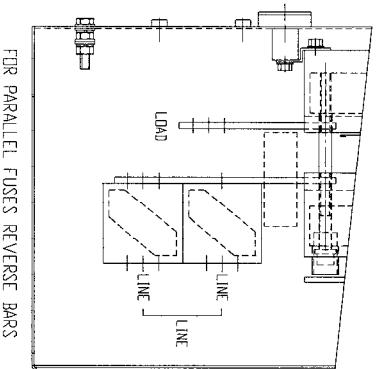


EARTH BOLTS (2 POS) M8
 MOUNTING & CONNECTION HOLES M8 CLEAR
 FANS 110/115V -81VA approx *2 (SEE ORDER)
 FANS 230/240V -81VA approx *2 (SEE ORDER)
 G/K LEADS 600mm
 CT FREE ISSUE
 FUSES, TT ETC OPTIONAL.



- D/M '94
- T800 41
- T1000 41
- T1300 48
- T1400 52

SEE 010085 FIR MTG DETAIL.

TOLERANCES UNLESS SPECIFIED
 UNLIMITED DIMENSIONS TO BE ± 0.2
 ANGLES 1° - 30°
 HOLES + 0.1 - 0.02

REMOVE SHARP EDGES
 ALL DIMENSIONS IN MILLIMETRES
 CHAMFER ALL THREADS AT 45 TO
 ROOT DIAMETER

POWERSEM LTD OWNS THE COPYRIGHT OF THIS DRAWING WHICH IS
 SUPPLIED IN CONFIDENCE AND WHICH MUST NOT BE USED FOR ANY PURPOSE OTHER THAN
 THAT FOR WHICH IT IS SUPPLIED, AND MUST NOT BE REPRODUCED WITHOUT PERMISSION
 IN WRITING FROM THE OWNERS. © POWERSEM LTD

ASSEMBLY ON

THIRD ANGLE PROJECTION

TITLE: 450-800KW <690V SS ASSY

JOB: VAR

MATL

SCALE: 1:5

DRW: PB

CHKD: MP

FINISH: TBA

SCALE: 1:5

DRW: PB

CHKD: MP

ISSUE No: 2/11/1996

DRG.No.B 020135